

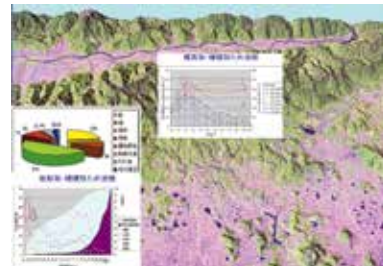


Prof.
MORITA Hidenori

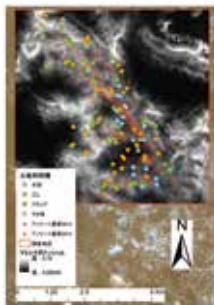


Study on rural environment using terrestrial information processing

In recent years global environmental problems such as desertification, the forest decrease, the degradation of the farmland have become serious, also in our imminent place, local environmental problems such as the Satoyama landscape(rural landscape) have become serious. These environmental problems have large or small spatial scale, but those are all phenomenon occurring on the real field, and the thing which can describe such spatial phenomenon is a map (geography space information). In our laboratory, we have been trying to analyze various environmental problems using a digital map and the artificial satellite image which we can treat with a computer.



Monitoring of land use/cover change and mathematical modeling



Land use/cover is greatly influenced by local environment and has a significant influence at the same time to area environment, also greatly influenced by the global environment and have a significant influence on the global environment. When thinking about local and global environment, It become fundamental problem how to control land use/cover. This study aims to bring useful result for planning, to make clear the cause and effect relationship of land use/cover change by modeling it.