

Activities of the Waste Management Research Center (1)

1. Education on Waste Issues on Campus

① Lectures Related to Waste Management

The faculty of the Waste Management Research Center (WMRC) at the Faculty of Environmental Science and Technology conducts a variety of lectures on waste management and research. These include “System of Sustainable Society,” “Solid Waste Management,” “Environmental Impact Assessment,” “City and Regional Planning,” “Geotechnical Engineering” and “Environmental Planning” for the undergraduate students at the Faculty of Environmental Science and Technology; and “Solid Waste Management Engineering,” “Environmental Economics,” “Environmental Policy Studies” and “System Engineering for Geotechnical Environments,” for graduate students at the Graduate School of Environmental and Life Science.

② Cooperation with the GP Graduate Program “Human Resources Development for Environmental Rehabilitation in Asia” since 2009

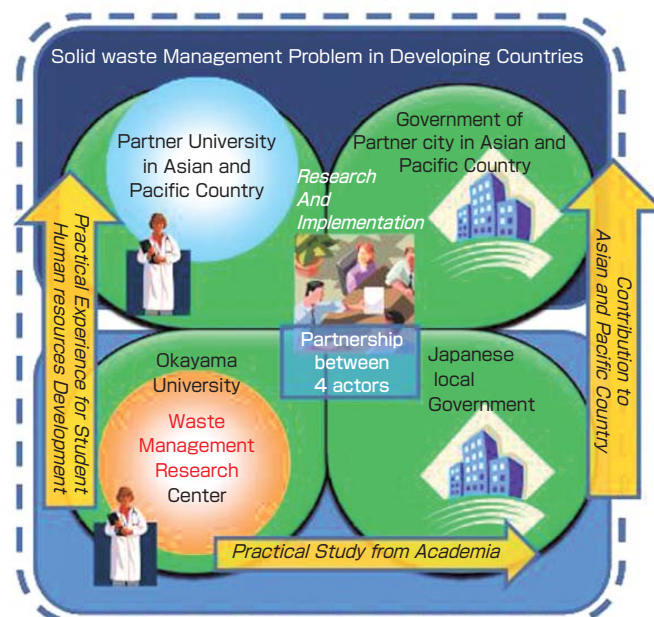
The GP Graduate Program, a special program that aims to develop human resources capable of tackling environmental problems in Asia, was adopted by the Graduate School of Environmental and Life Science in 2008. The curriculum included the following projects: internship 1 (on campus material-cycle systems) attempted to train students to conduct surveys on material flows and examine the recycling of waste and rationality of waste treatment inside the campus. During internship 2 (regional material-cycle systems), the faculty directed students to conduct field surveys and come up with countermeasures on waste management issues on a regional scale in Okayama, in cooperation with Okayama city and Okayama prefecture municipalities.

(Details are available at http://www.okayama-u.ac.jp/user/esd-asia/index_e.html)

③ The Implementation of “Practical Research and Education of Solid Waste Management as a result of the Partnership among Universities and Governments in Asia and Asia-Pacific Countries”(Project since 2010)

In order to make students familiar with Asian environmental problems at an early stage and to develop proactive leaders in solid waste research worldwide, the WMRC promotes research on waste management. It does so by encouraging the exchange of students from cooperative universities in Asia, who get educated and conduct research on solid waste management.

(Details are available at <http://ambiente.okayama-u.ac.jp/gakkan/en/top.html>)



Partnership between Universities and Governments